

Jobscope, the most comprehensive job costing and integrated business information system for your order-driven company, balances critical requirements, function, and technology while offering the comfort and confidence necessary to overcome your unique business challenges.



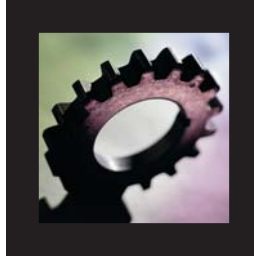
Project Estimating

Project Estimating

Overview

If your company quotes, engineers, and produces products in response to customer requests or orders, it can be classified as an Engineer-To-Order company. As such, your business requires a business information system that is not only comprehensive, but also inherently capable of providing detailed information about each customer order. JOBSCOPE's Project Estimating system is designed to help you calculate costs and selling prices for jobs you are bidding.

In the Engineer-To-Order environment, each job or contract usually involves the manufacture, assembly, or service of an item with unique characteristics that make it slightly different from items provided on other jobs or contracts. Many times, the award of a contract is based upon the customer's acceptance of a proposal received through a competitive bid process. Because of the requirement to provide accurate bids and proposals to prospective customers, one of the most critical requirements of any order-driven environment is the accurate estimating of all costs associated with an item or a contract.

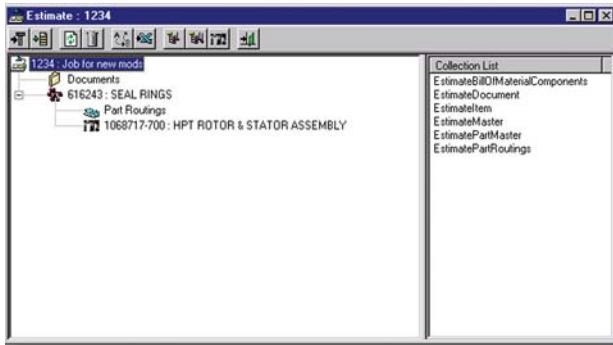


Features

- Allows you to associate documents with an estimate
- Provides the configuration and costing of items which do not exist in the Engineering BOM
- Imports part structure
- Imports work orders
- Exports to Microsoft Excel
- Exports to master engineering files
- Provides "Same as except" estimating
- Allows multiple proposal/estimate capability per bid
- Creates orders and updates job budgets directly from estimates
- Calculates the cost of any BOM structure
- Integrates Microsoft Excel spreadsheet cost templates

Receiving an Order

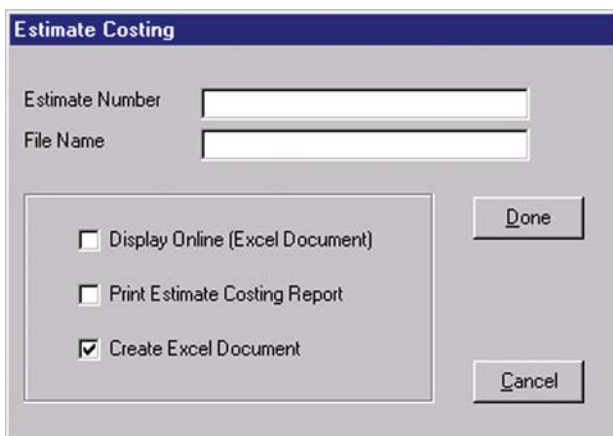
When an order is received from the customer for which an estimate has been prepared, the original estimate may be easily revised to reflect any changes, and then transformed into an order by simply entering the Estimate Number on the Order Entry master screen. All cost figures associated with the Estimate are automatically transferred to the Order Entry *Job Budgets* screen.



The main Estimating view allows you to perform all Estimating functions.

Capabilities

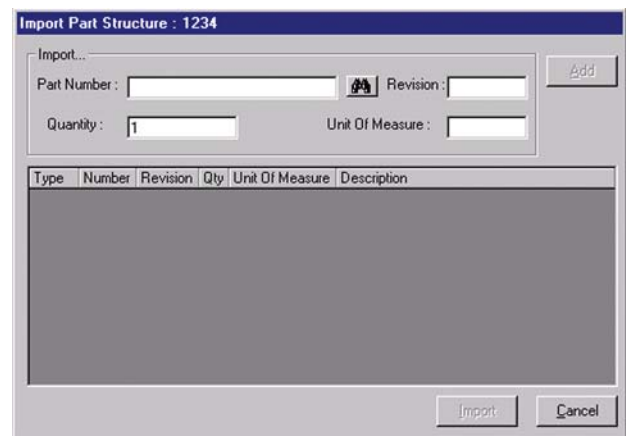
JOBSCOPE's Estimating program provides the capability to configure estimates and generate quotations for existing bill-of-material structures, previous jobs and/or work orders, as well as items that have never been created. All or parts of historical jobs may be copied providing the ability to perform "same-as-except" estimating. A complete cost roll-up can then be produced in an integrated Microsoft Excel spreadsheet.



This screen allows you to export your estimates to Microsoft Excel.

Importing/Exporting

You can import parts and work orders to create an estimate, or export estimates to Parts and Change Control or to a Microsoft Excel spreadsheet. The Import Part structure screen allows you to import part information from the Parts and Change Control module to create estimate items. The Import Work Order screen allows you to import part information from work orders to create estimates.



This screen allows you to import parts from Parts and Change Control.

Developing an Estimate

The user begins developing an estimate by completing the *Estimate Master* screen. Information about the prospective customer is transferred from the *Customer Master* by selecting a valid customer.

This screen allows you to enter, modify, and delete Estimate Master records.

The individual items being estimates are entered as *Line Items*. The User may enter or import any item or item subassembly to be configured and estimated either from the master engineering files or from previous jobs. If the estimate contains standard items, the system will automatically calculate the current cost of the items by totaling the current standard costs of all material and labor relating to the items. Any adjustments or markups can then be entered to produce the final selling price.

The Estimate Item screen allows you to add items to an estimate.

Creating an Order

An order can be generated from an estimate simply by entering the estimate number in the Order Entry screen. Job budgets can be created from estimates for

The Estimate Part Routing screen allows you to maintain routings for parts being used on an estimate.

future comparison of the sales estimate versus current estimate versus actual job cost. If the estimate contained custom configured items, and these items are to be used as a “starting point” for designers working with the customer order, engineering parts and bills of materials can be automatically generated, even creating new part numbers for the entire structure, if necessary. Documents can be associated with estimates. The Estimate Document screen allows you to specify a path location for the document related to the estimate.

The Estimate Bill of Material Components screen allows you to maintain BOM information.

JOBSCOPE’s Project Estimating system allows you to provide accurate bids and proposals to your prospective customers. With JOBSCOPE, the total business information system for Engineer-To-Order companies, you won’t have to rely on a software package that does not fit the way you do business.



The Estimate Part Master screen allows you to enter, modify, and delete parts master records for an estimate.



JOBSCOPE

Jobscope Corporation
355 Woodruff Road · Suite 406
Greenville · South Carolina
29607
800.443.5794
864.234.4852 (fax)
www.jobscope.com